

MAGNUM MRC

Smart WiFi Thermostat for electric underfloor heating systems.

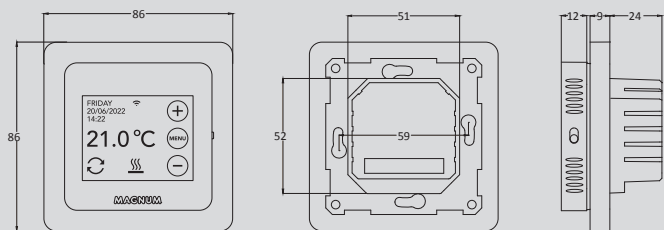


1. Introduction

Read this manual carefully and keep it with other warranty documents. Connection must be carried out by a qualified installer in accordance with local regulations. Before installing or disassembling the thermostat, always switch off the electricity in the meter cupboard. The MRC thermostat can be installed in a single flush-mounting box 50 mm deep, according to standard DIN formats.

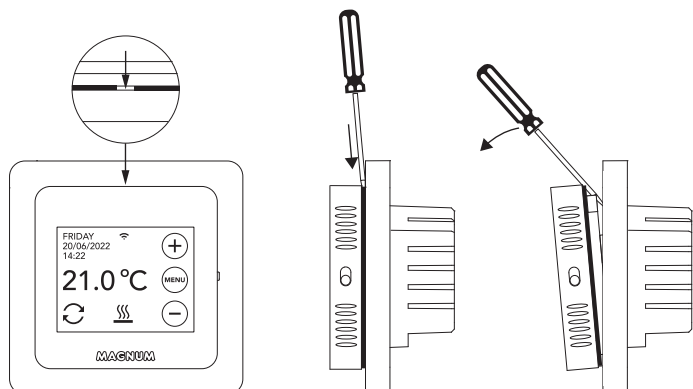
2. Technical data

Volts	230V - 50/60 Hz
Max. Load	max. 16 Amp. / 230V
Temp. range	+5/+40°C
Cover	IP21
Color	Polar white (RAL 9010)
Sensor	incl. floor sensor and build in air sensor
Warranty	2 year manufacturer warranty
Approvals	FI / CE
Manufacturer	MAGNUM Heating Group B.V. Netherlands

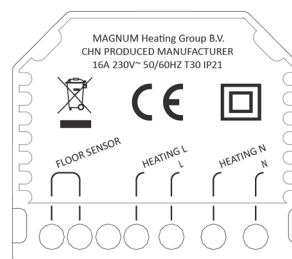


3. Assembly/Dismounting

Make sure the power is off. Remove the display by carefully inserting a small flat-blade screwdriver into the top recess of the black foam (between the display housing and the cover frame). After this, the display case can be released with a lever movement. This requires some force.



4. Connection instructions



FLOOR SENSOR	Floor sensor connection
HEATING L *	Heating cable connecting wire
L	Power supply (Phase)
HEATING N *	Heating cable connecting wire
N	Power supply (Neutral)

* Order HEATING L or HEATING N does not apply.

EARTH: Connect the earth of the heating cable and the earth of the power supply outside the thermostat using the supplied terminal block.

Bring the thermostat into position, mount and secure it in the flush-mounting box using 2 screws. Place the cover frame and carefully bring the display case back into position. Then press it firmly until there is no more space between the display housing and cover frame.

5. Startup menu

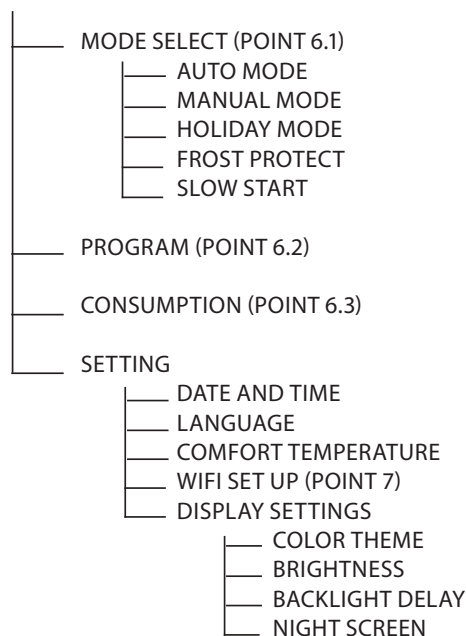
Make sure that the on/off switch on the right side of the thermostat is in the correct position. After connection to the mains, the startup menu appears:

- Language > Year > Month > Day > Time
- Automatic Summer Winter Time
- Floor finish: Wood/other (tiled floor)
- Sensor type: 12K is supplied as standard
- Temp. registration: Room or Floor
- Desired comfort temperature
- Overview of pre-programmed times
- Slow start-up (Only for newly installed floors. See point 6.1)
- WiFi set up (See point 7)

6. Operation

You can easily operate the thermostat via the touchscreen. The menu structure is structured as follows:

MENU



6.1 Explanation of functions and symbols



Auto mode
Thermostat follows the set program.



Manual mode
Thermostat is operated manually.



Vacation mode
Thermostat is in lowering mode and follows the program again after the number of set days.



Frost protection mode
Thermostat keeps the temperature at a minimum of 7 degrees.



Slow Start mode
Temperature gradually rises over 20 days to prevent cracking.



Temporary mode
Auto Mode temporarily interrupted manually. Follows Auto Mode program again at next switching moment.



Heating
System is heating up.



Open window detection
Detection of rapid drop in temperature. Stops when temperature is stable.



WiFi signal strength



Keylock active
Press ⊖ for 5 sec to activate.
Press ⊕ for 5 sec to deactivate.

6.2 Programming

MENU > PROGRAM

- > Overview current schedule
- > Overwrite Schedule (Yes/No)
- > Number of periods (1,2 or 3 per day)
- > Select (multiple) days



not set



selected



already set

- > Set periods & Comfort temperature
- > Repeat for the remaining days.
- > After confirmation, the thermostat will follow this program in AUTO
- > MODE.

6.3 Consumption

The average consumption of the underfloor heating can be read as a percentage. The thermostat must be on for at least 1 month. To calculate the average consumption per day you can use the following calculation: % x installed power x 24

Example:

Installed power is 300 Watt and consumption is 20%:
 $20\% \times 300 \text{ Watt} = 60 \text{ Watt consumption per hour.}$
 $60\text{W} \times 24 \text{ hours} = 1.440 \text{ Watt consumption per day.}$

6.4 Keylock

Press ⊖ for 5 sec to activate.
Press ⊕ for 5 sec to deactivate.

6.5 Advanced Settings

PLEASE NOTE: Settings in this menu may only be adjusted in consultation with the supplier in order to avoid undesired results. Press MENU for 10 seconds to activate it.

7. Connecting to WIFI

If you also want to operate the thermostat via your smartphone, you need to connect it to your home network. For this you need to download the App. After this, the thermostat can also be accessed via your mobile network.

STEP 1:

Scan the QR code with your smartphone or search the Apple App Store or Google Play Store for MAGNUM MRC. Download the App and launch it. Then create an account and complete the process.



STEP 2:

On the thermostat:
MENU > SETTINGS > WIFI SET UP > DEFAULT MODE.
The WiFi symbol is flashing rapidly.

STEP 3:

- Open the App on Smartphone or tablet
- Choose "Add device"
- Select the MRC thermostat in the menu
- Press "connect".
- Choose the right WiFi network (Doesn't work on 5 Ghz WiFi networks!)
- Enter password and confirm

The thermostat will now connect to the WiFi network. This will take a maximum of 1 minute.

6.1 Alternative method (Access Point)

If the above method does not work, then Access Point is an alternative way (Does not work on 5 Ghz WiFi networks):

STEP 1:

Smartphone: Bluetooth on.

STEP 2:

Thermostat: MENU > SETTINGS > WIFI SET UP > AP MODE.
The thermostat will now create a hotspot.

STEP 3:

Smartphone: Now connect to this hotspot via the WiFi settings of your smartphone or tablet. The thermostat will then make the connection to your home network itself.

8. Google Assistant or Amazon Alexa



Via a Google or Amazon supported speaker you can set the temperature of your thermostat higher or lower or ask what the current temperature is. This can be done for every thermostat added in the App.

Connecting to Google Assistant or Amazon Alexa is explained in the App. In the App, go to your "Profile", choose "More Services" from the menu and follow the steps. You will also be prompted to install a service skill:

Google skill: MAGNUM thermostat
Amazon skill: MAGNUM MRC