

C17 Programming Heating Thermostat



User Manual

[General]

- Heating Thermostat with weekly programming adopts the latest single-chip computer control technology.
- It has the high reliability and powerful anti-jamming. It can realization energy-saving and comfortable living environment
- The application is the electric heating equipment and Water heating system of electric heating or actuator control. According to the preset temperature, the thermostat will automatically start and stop the controlled object (valve, floor heating, the heating wall, electric heater etc).
- Multiple time modes: 5+2/6+1/7days, the heating equipment supports different temperature setting accordingly with 6 time-modes daily. Users are free to choose manual mode or full automatic mode for different purposes.
- Using flame resistance material, the heating equipment is safe and reliable. Its appearance is stylish and its mirror screen would be very easy to clean. Curved surface, one face design. Anti scratch the surface.
- The clock would continue to run even if power was cut off and it will not affect the period setting value.
- Keypad locking function is designed to prevent the children from misusing.
- Capacitive touch screen technology and Iron plate installation, do not need to split the thermostat.

[Technical parameters]

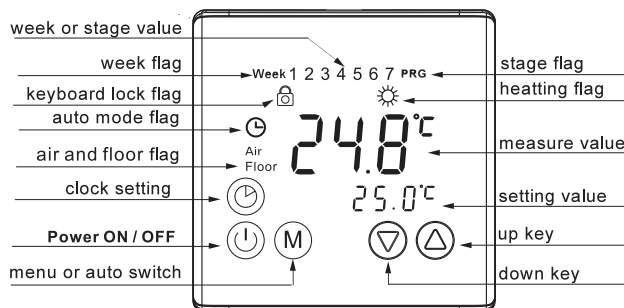
- Power Supply: 85-250VAC 50/60 Hz
- Internal sensor measurement range: 0 - 40℃. Setting range: 5 - 35℃ (factory settings: 25℃)
- Inside sensor: NTC B=3380 10k @25degrees Celsius
- Display resolution: 0.1℃ Setting Unit: 0.5℃/step
- The maximum switch power: **3A [C17.GH1]**
The maximum switch power: **16A [C17.GH3]**
- External sensor measurement range: 0 - 99℃. Setting range: 5 - 95℃ (factory settings: 50℃)
- Extra sensor: NTC B=3380 10k @25 degrees Celsius, length=3 meters (optional)

Operation Guide

[On and off]

Press keys you can turn on or turn off the thermostat.

The display would be as the following When turning off.



[Children Lock]

Press key for 2 seconds at the same time, the controller keypad would be locked. Screen would show or . Press the at the same time for 2 seconds under the locked status, keypad would be unlocked.

[Temperature control mode]

According to the sensor setting of thermostat, there are three different control modes, enter the advance function to set.

Internal control (IN): Only enable built-in sensor temperature measurement, the temperature control is based on the built-in temperature sensor. It is suitable for the detection of air temperature or the room temperature.

External control (OUT): Only enable external sensor to temperature measurement, the temperature control is based on the external sensor. It is suitable for the detection of the heating body temperature.

Dual temperature control (ALL): Temperature control is based on the built-in temperature sensor and an external temperature sensor (over-temperature protection). It is suitable for the detection of room temperature and heating body whether over temperature monitoring. If the external sensor is over temperature, thermostat will shuts down the heater.

[System time]

How to set the system time: Keep pressing for 5 seconds, it will enter into the time setting. The current revisable object will flash and display. Press and choose time you want to revise (week / hour / minute), press or to modify the current setting. If you need to modify the previous parameters, please press key. After the modified minutes you can press to exit the system clock settings.

[Display three kinds of temperature]

The thermostat works for temperature control in mode **IN** and mode **ALL**. The main screen shows air temperature or room temperature when AIR icon lit, the vice-monitor would set temperature every 5 seconds and alternatively display current time.

When the thermostat is in **OUT** mode, the **FLOOR** icon will be lit. The main screen will display floor temperature or external sensor location.

When the temperature is in mode **ALL**, press and can detect floor temperature or external sensor location, and the **FLOOR** icon will be lit. The main screen will automatically display air temperature 5 seconds later after the **AIR** icon lit.

[Automatic / manual switch]

Press you can choose the manual mode or automatic mode.

Manual mode: System will control temperature under the set value without any change.

Automatic mode: System would control temperature according to the preset temperature values in different time. The icon will lit, which means that the system is running under automatic mode. The **week** and **Stage** icon would alternately display every 5 seconds, **1-7** is systematic reuse. When screen shows **WEEK**, 1-7 would display the values of the week. When screen shows **STAGE**, 1-6 would display the current values.

[Setting the periods of time modes]

The periods setting can realize the control of temperature and time under automatic mode. Once setting up, the values could be saved and reused in the thermostat forever. The thermostat can't quit when you set the periods and it will automatically save data and exit when all setting is finished.

The thermostat can save three kinds of schedules (5+2 / 6+1 / 7) in 6 periods; One week for a cycle.

Each data is saved as the start time (hours: minutes) and the temperature values of this period. The end time of the period would be saved as the start time of next period. You can also shut down a certain period according to your needs.

Press the for 5 seconds, you will enter into the period setting interface. The number is blinking in WEEK area, it means the mode of your set (5+2 or 6+1 or 7). You can press button to select the object you want to modify (the period start time: hours, minutes and set temperature). Press or to modify the value. If you want to turn off a period, please press until the **OFF** shows.

For example: in the 5+2 mode, the period setting sequence:

Press 5s, the week area will blinking 1-5, Reference on the right Image

P1:hr>min>setting value-> P2:hr>min>setting value-> P3:hr>min>setting value->...-> P6:hr>min>setting value The week area will auto change 6-7 and blinking.

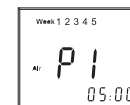
P1:hr>min>setting value-> P2:hr>min>setting value-> P3:hr>min>setting value->...-> P6:hr>min>setting value
Total setting value is 12 sets (<5>P1-P6,<2>P1-P6), you will setting 12X3 values. If you want skip the setting item you can press , You can use the to back to the previous setting.

The automatic default mode of the machine factory is 5+2 mode. Time specific data see the following table. You can modify when you enter the programming interface:

5+2 mode	ID	P1	P2	P3	P4	P5	P6
Monday to Friday	Start time	06:00	08:00	11:30	12:30	17:00	22:00
	Set value	22℃	15℃	15℃	15℃	22℃	15℃
Saturday to Sunday	Start time	06:00	08:00	11:30	12:30	17:00	22:00
	Set value	22℃	15℃	15℃	15℃	22℃	15℃

For example: When the system time is Friday 08:20 under automatic mode, display would show as: **STAGE 2** and the setting temperature value would be 15 degrees.

The thermostat can't quit when you set the periods, it will automatically exit when all setting is finished.



[How to system parameter setting]

Warning: System setting is used to set some important parameters of the system, that's only for professionals. Do not make any improper modification. The item already been debugged and tested by professionals, there is no need to reset.

Enter the system setting: Press (M) button 5 second on thermostat switch off status, you will enter into system setting program. You can press (M) to switch the system parameters. At the same time press ▲ or ▼ to modify settings values. Select a set value. If you do not press the ▲ or ▼, the parameters would not be modified.

Display	Set the content	Adjustment range	The default value
bL	Backlighting status	On: Always on OFF: Auto turn off after 5sec	OFF
	Backlight lighting mode, can be set according to personal preference		
SRL	Status at re-power	OFF: off status at every time On: the same as previous,	OFF
	Used to control the power state of the boot		
FP	Antifreeze	On: Enable / OFF: Disable	OFF
	Low temperature protection, what is suitable for the water system To prevent the pipe from freezing at low temperature.		
CAL	temperature correction	-5℃ ~ 5℃	-2.5℃
	Used to correct the sensor value, screen would show the value needed to be revised when adjusting; the revised value will be displayed after 3 seconds.		
dt 0	Internal sensor hysteresis	0.5-4℃	1℃
	Built-in temperature sensor hysteresis		
dt 1	External sensor hysteresis	0.5-5℃	3℃
	External temperature sensor hysteresis		
PC	The period-time mode	5+2 / 6+1 / 7	5+2
	5+2: Monday to Friday is set as the same; Saturday to Sunday is set as the same.		
	6+1: Monday to Saturday is set as the same. Sunday is individually controlled.		
	7: Monday to Sunday is set as the same.		
SEN	Sensor or temperature control mode	IN: Built-in OUT: External ALL: Dual temperature control	IN
	IN: internal control, room sensor Out: external control, floor sensor ALL: double temperature double control, the internal room temperature sensor, external sensor overheating protecting		
LOP	External temperature sensor limit	40-80℃	50℃
	The sensor is set to ALL, the temperature limit external sensor value		
DEF	Restore factory settings	Restore factory settings	To restore the default

[The error and solution of common system]

1. **Fault phenomenon :** There is no display Reason & solution:
- 1、Power supply system is having problems or power is supplied incorrectly, please check if the inlet wire is normal.
 - 2、If the connection is not right, please wired up as the wiring diagram on the back side.
 - 3、Actual temperature is too low, please note the thermostat temperature range. If the temperature is lower than -5℃, the unit cannot normally display.
 - 4、Power supply box and the motherboard Coupling is not connected correctly, please connect correctly.
 - 5、Power supply box and the motherboard Coupling are opposite inserted, please mind the direction
 - 6、Power supply box and the motherboard Coupling is broken, please don't overexert. Coupling length is 6cm, the installation must be careful. If damaged, no warranty and replacement

2. **Fault phenomenon :** Display rupture

Reason solution: Display encounters hard objects or sudden force, no replacement and warranty

3. **Fault phenomenon :** Display a black screen

Reason solution:

If the display surface temperature is too high, please note whether there is heater nearby, if so please remove.

4. **Fault phenomenon :** Display ER0 or ER1

Reason solution:

ER0: If built-in sensor is abnormal, please pay attention to whether the small black dot in temperature sensing window was damaged during removal

ER1: The system is set in the dual temperature control (ALL) mode, or it is not connected with an external sensor, or the external sensor is abnormal.

5. **Fault phenomenon :** No pen on LCD

Reason solution:

Please check whether the iron plate is deformation when installation. If it is deformation, please correct it.

6. **Fault phenomenon :** No backlight

Reason solution: Please check whether backlight lamp connection is broken when removing in the panel.

7. **Fault phenomenon :** Backlight always bright

Reason solution: 1、The ON is set in the system menu bL 2、If it is damaged, please replace it.

8. **Fault phenomenon :** Large deviation of measurement temperature and the actual temperature

Reason solution: 1、The thermostat should be installed at ventilated place. It can not be installed at the place in direct sunshine or nearby the heater

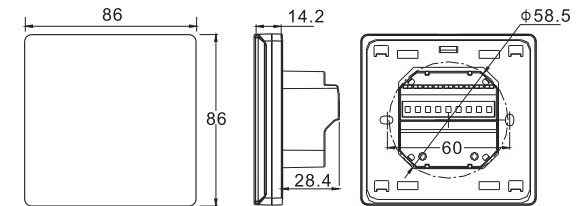
2、Back connection screw is not locked, causing terminal serious fever

9. **Fault phenomenon :** Display 0 degrees

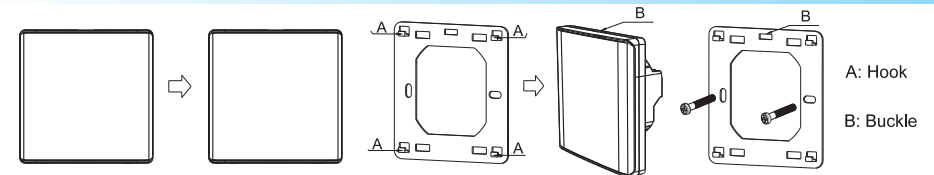
Reason solution: It is normal if thermostat display 0 degrees when the actual environment is below 0 degrees.

The above is some of the most common errors, if you can't solve, please contact the local dealer!

[Dimension in mm]



[Installation guide]



This thermostat belongs to precision electronic equipment, please be careful when installation.

- Insert the screwdriver (4MM --) into the groove on the top of the thermostat (B) and turn it 10 degrees lightly. Press the iron plate lightly to separate the iron plate from the thermostat.
- Let the iron plate is fixed in a wall box use 2pcs F4X25, keep the iron plate level.
- Connect the wire according to the wiring diagram of the thermostat back, check the diagram correct.
- Push the thermostat into the mounting hole of the iron plate and press down, You will hear the sound "DI", indicating that the thermostat has been installed.

If you need disassembly thermostat from wall, you can insert screwdriver (4mm --) into the groove on the top of the thermostat (B) and turn 10 degrees lightly. Keep the screwdriver up and push the thermostat up to 4MM. Pull out the thermostat and use the screwdriver to release the screw on terminal, so that the thermostat and the wire are separated.